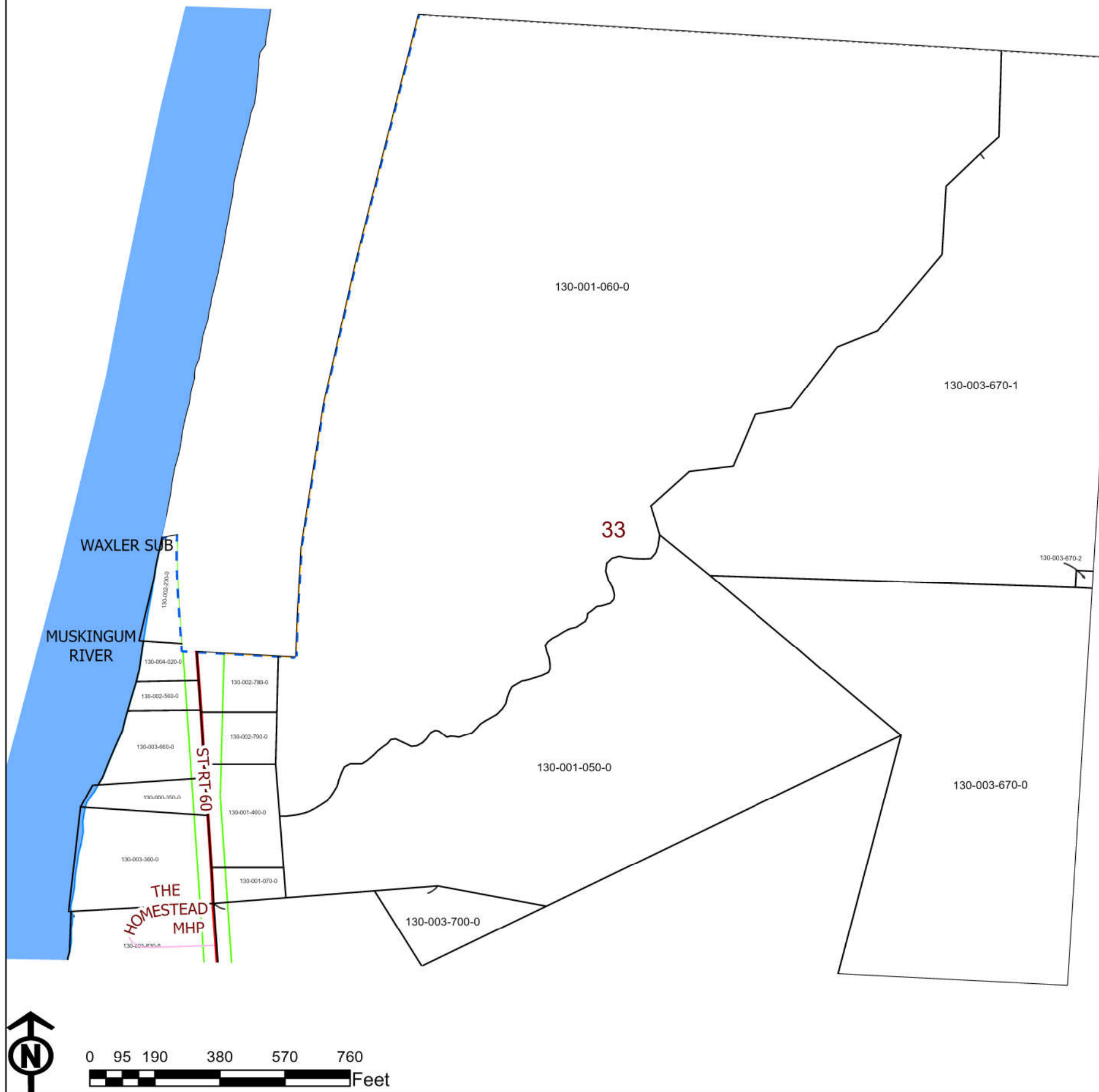


MORGAN COUNTY, OHIO

MORGAN TWP. SEC. 33, T-11, R-12 NORTH

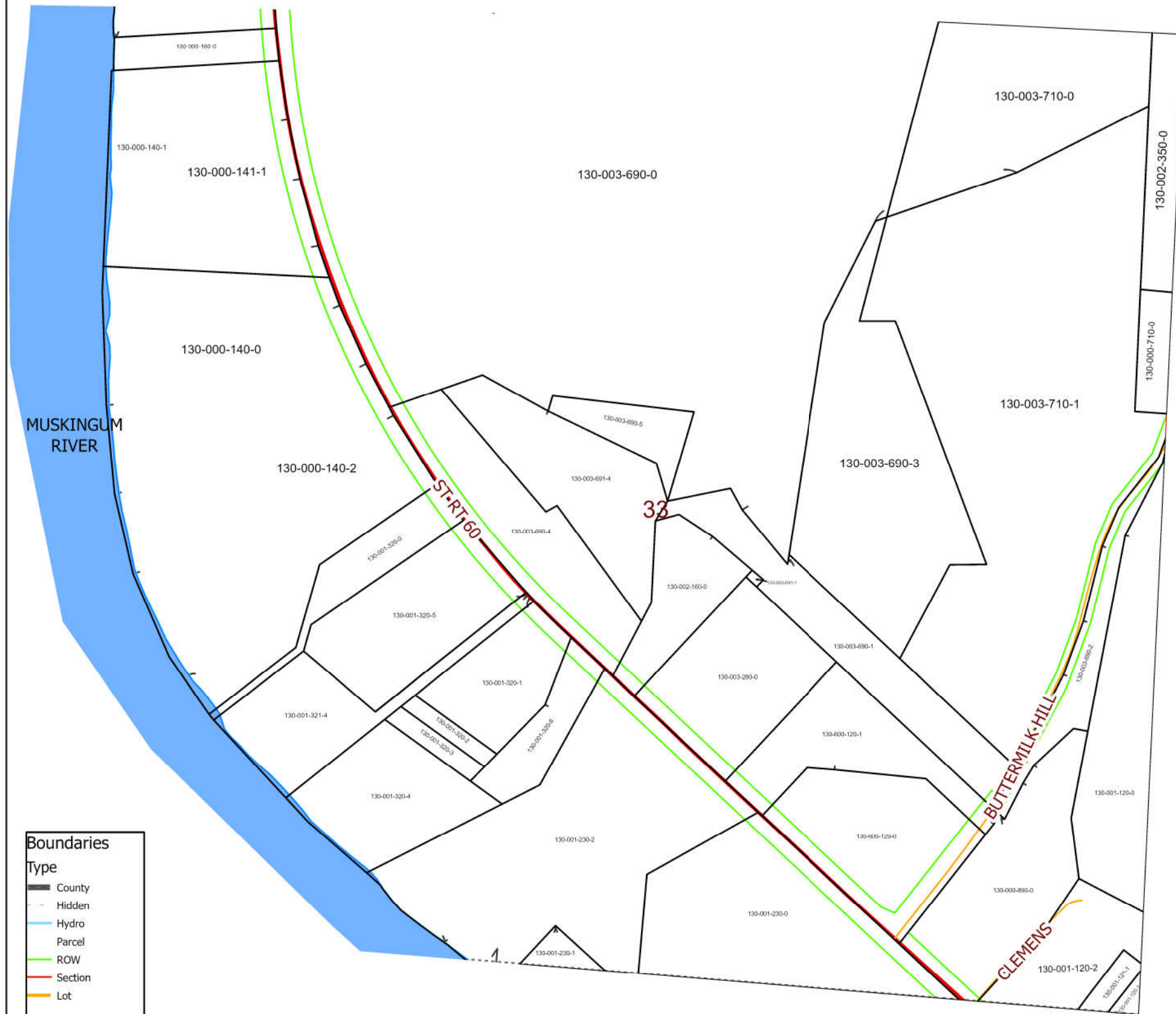


PIN	Owner	LegalDescr	VOL	PAGE	Acres
130-000-350-0	BROWN PRESERVATION TRUST SUSAN R MOORE, TRUSTEE	R12 T11 S33 SD 27	OR233	968	0.7
130-003-670-2	BURKHART CHAD	R12 T11 S33 SD 49	OR232	2719	0.058
130-003-670-0	BURKHART CHAD	R12 T11 S33 SD 1	OR232	2719	18.32
130-003-660-0	CAMPBELL HOPE M	R12 T11 S33 SD 31	OR236	488	1.1
130-003-360-0	CROSTON BARTH	R12 T11 S33 SD 24	OR212	575	2.43
130-004-020-0	DEARSTINE JAMES E & CAROL D	R12 T11 S33 SD 25	OR207	1417	0.38
130-001-070-0	GARDNER DONALD D & SHARON C	R12 T11 S33 SD 11	D.V 124	17	0.46
130-001-060-0	GARDNER DONALD D & SHARON C	R12 T11 S22 SD 3	D.V 122	107	63.82
130-001-050-0	GARDNER DONALD D & SHARON C	R12 T11 S33 SD 2	D.V 122	107	18.69
130-002-200-0	HARTLEY DONNA MAE & DONALD A	R12 T11 S33 SD 10	OR84	539	0.925
130-001-460-0	HICKS LEONARD A	R12 T11 S33 SD 30	OR223	3420	1.51
130-003-670-1	REICHENBACH JOHN H & DARLENE	R12 T11 S33 SD 44	D.V 194	158	26.399
130-003-700-0	SCHAAD RYAN C & JESSICA D MAXWELL CLAUDE M & HEIDI L	R12 T11 S33 SD 14	OR208	2013	1.31
130-003-690-0	SCHAAD RYAN C & JESSICA D MAXWELL CLAUDE M & HEIDI L	R12 T11 S33 SD 4	OR208	2013	52.356
130-003-830-0	SCHILLING II LLC CHARLES L	R12 T11 S33 SD 18	OR232	5069	2.22
130-002-790-0	SMITH SHAWN R & DIANA C	R12 T11 S33 SD 3	OR217	2147	0.8
130-002-780-0	SMITH SHAWN R & DIANA C	R12 T11 S33 SD 28	OR217	2147	1.25
130-002-560-0	THOMPSON GLORIA A TRUSTEE	R12 T11 S33 SD 26	OR216	473	0.37

Boundaries	
Type	Color
County	Black
Hidden	Grey
Hydro	Blue
Parcel	Black
ROW	Green
Section	Red
Lot	Orange
<all other values>	Grey

MORGAN COUNTY, OHIO

MORGAN TWP. SEC. 33, T-11, R-12 SOUTH



PIN	Owner	LegalDescr	VOL	PAGE	Acres
130-001-150-1	4970 N ST RT 60 LLC	R12 T10 S04 SD 7	OR228	3354	0.45
130-001-120-1	4970 N ST RT 60 LLC	SD 52	OR228	3354	0.122
130-001-151-2	4998 N ST RT 60 LLC	R12 T10 S04 SD 10	OR218	1771	0.32
130-001-121-1	4998 N ST RT 60 LLC	R12 T11 S33 SD 60	OR218	1771	0.3
130-001-150-0	5000 N ST RT 60 LLC	R12 T10 S04 SD 7	OR228	3362	0.563
130-001-143-2	5000 N ST RT 60 LLC	R12 T11 S34 SD 41	OR228	3362	0.51
130-001-120-2	5000 N ST RT 60 LLC	R12 T11 S33 SD 61	OR228	3362	1.922
130-000-160-0	BATEMAN KURTISE N & SUSAN E	R12 T11 S33 SD 33	OR117	64	1.017
130-600-120-0	CEH INDUSTRIAL HOLDINGS, LTD	R12 T11 S33 STATE	OR152	315	3.755
130-003-690-4	DLG INVESTMENTS LLC	R12 T11 S33 SD 48	OR187	310	3.79
130-000-890-0	EARICH J KENT & GRANT	R12 T10 S33 SD 17	D.V 185	656	3.91
130-001-321-4	FINLEY FIRE TWINSBURG, LLC	R12 T11 S33 SD62	OR229	2092	2.514
130-001-320-5	FINLEY FIRE TWINSBURG, LLC	R12 T11 S33 SD 47	OR229	2092	3.446
130-001-320-0	FINLEY RENTALS LLC	R12 T11 S33 SD 32	OR215	2810	1.47
130-000-140-1	FINLEY RENTALS LLC	R11 T11 S33 SD 53	OR187	365	6.825
130-000-140-0	FINLEY RENTALS LLC	R12 T11 S33 SD 29	OR187	365	16.459
130-002-350-0	FOX JOEL M & CHELSI D	R12 T11 S33 SD 35	OR232	5970	1.616
130-002-340-0	FOX JOEL M & CHELSI D	R12 T11 S34 SD 12	OR232	5970	4.728
130-003-691-4	LAPP DAVID & ANGELA	R12 T11 S33 SD 54	OR208	454	3.522
130-003-690-5	LAPP DAVID & ANGELA	R12 T11 S33 SD 56	OR160	327	1.013
130-003-710-1	LOAR KEYSTONE INHERITANCE TRUST	R12 T11 S33 SD 43	OR228	1180	19.471
130-003-690-3	LOAR KEYSTONE INHERITANCE TRUST	R12 T11 S33 SD 42	OR228	1180	6.737
130-003-690-2	LOAR KEYSTONE INHERITANCE TRUST	R12 T11 S33 SD 50	OR228	1180	1.621
130-000-720-0	LOAR KEYSTONE INHERITANCE TRUST	R12 T11 S34 SD 32	OR228	1180	0.369
130-000-710-0	LOAR KEYSTONE INHERITANCE TRUST	R12 T11 S33 SD 37	OR228	1180	0.683
130-600-120-1	MAHLE ENGINE COMPONENTS USA INC	R12 T11 S33 SD 58	OR190	175	2.735
130-003-690-1	MAHLE ENGINE COMPONENTS USA INC	R12 T11 S33 SD 40	OR177	643	3.237
130-002-160-0	MAHLE ENGINE COMPONENTS USA INC ATTN: TREASURER	R12 T11 S33 SD 36	OR177	643	1.829
130-003-691-1	MAHLE ENGINE COMPONENTS USA INC ATTN: TREASURER	R12 T11 S33 SD 57	OR177	643	0.024
130-003-280-0	MAHLE ENGINE COMPONENTS USA INC ATTN: TREASURER	R12 T11 S33 SD 22	OR177	643	3.48
130-001-320-6	MAHLE ENGINE COMPONENTS USA INC ATTN: TREASURER	R12 T11 S33 SD 51	OR177	643	1.262
130-001-230-1	MCIC NORTH STATE ROUTE 60 INDUSTRIAL LTD	R12 T11 S33 SD 55	OR204	93	0.302
130-001-230-2	MCIC SINTER PROPERTY	R12 T11 S33 SD 59	OR204	93	6.82
130-001-230-0	MORGAN COUNTY IMPROVEMENT CORPORATION	R12 T11 S33 SD 19	OR204	93	8.025
130-001-220-0	MORGAN COUNTY IMPROVEMENT CORPORATION	R12 T10 S04 SD 2	OR204	93	8.075
130-001-320-3	ROBB JOSEPH & VICTORIA	R12 T11 S33 SD 41	OR105	496	0.354
130-001-320-2	ROBB JOSEPH & VICTORIA	R12 T11 S33 S D 39	OR105	496	0.307
130-001-320-1	ROBB JOSEPH & VICTORIA	R12 T11 S33 S D 38	OR229	2098	2.035
130-003-710-0	SCHAAD RYAN C & JESSICA D MAXWELL CLAUDE M & HEIDI L	R12 T11 S33 SD 13	OR208	2013	5.59
130-003-690-0	SCHAAD RYAN C & JESSICA D MAXWELL CLAUDE M & HEIDI L	R12 T11 S33 SD 4	OR208	2013	52.356
130-003-830-0	SCHILLING II LLC CHARLES L	R12 T11 S33 SD 18	OR232	5069	2.22
130-001-140-0	SDL WOODS LLC	R12 T11 S34 SD 17	OR228	3366	16.552
130-001-120-0	SDL WOODS LLC	R12 T11 S33 SD 6	OR228	3366	3.962
130-001-320-4	ZEMAR INC	R12 T11 S33 SD 46	OR229	2098	2.87

